

MISSION

The main mission of IGME is to provide the State Administration, the Autonomous Regions Administrations and the general society, with precise knowledge and information regarding the Earth Sciences and related technologies for any development on the Spanish territory.

FUNCTIONS

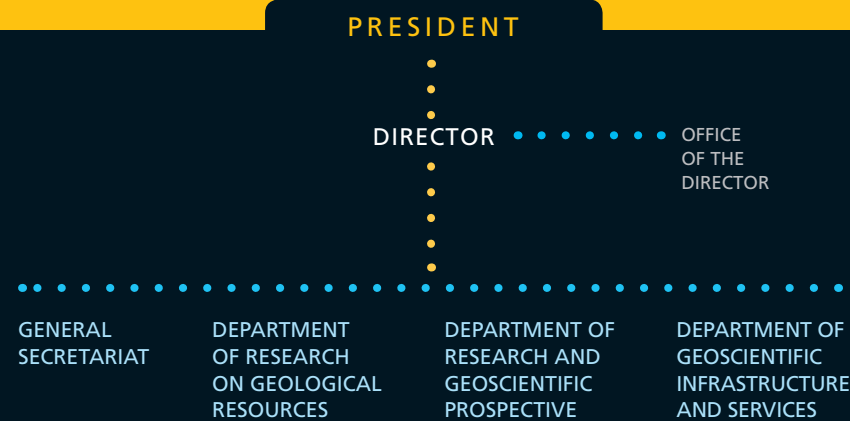
The functions of the Geological Survey of Spain are:

- ▶ Studies, analysis and research in the field of Earth Sciences and Technologies.
- ▶ Generation of basic scientific knowledge.
- ▶ Information, technical-scientific assistance and advice to public administrations, economic agents and society in general, concerning geology, hydrogeology, geoenvironmental sciences, geological resources and minerals.
- ▶ Interdisciplinary relations with other areas of knowledge, contributing to the best understanding of the territory and of the processes that form and modify it, to the sustainable use of its resources and the conservation of the geological and hydrogeological heritage.
- ▶ Preparing and implementing budgets of R&D&I and knowledge infrastructures in national and international programmes, within the scope of its competences.

ABOUT IGME

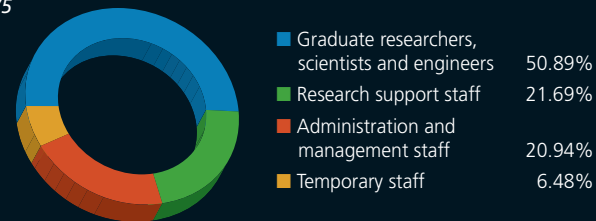
The Geological Survey of Spain (Instituto Geológico y Minero de España – IGME) was created by a Royal Decree of 12th July 1849 with the original denomination of “Commission for the Geological Chart of Madrid and the Kingdom”.

Today IGME is a self-governing Public Research Institution attached to the Ministry of Economy and Competitiveness.



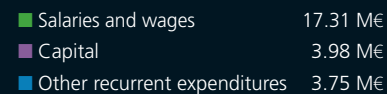
Human Resources

Total IGME staff: 401
Total permanent staff: 375

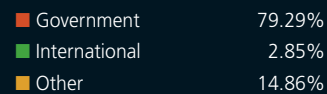


Expenditure

Total budget: 25.04 million Euros



Income sources



Data year 2013



LABORATORIES

The experimental support for its research and technical activities is carried out by IGME in its modern laboratories located in Tres Cantos (Madrid). The facilities can provide water, soils, rocks, minerals, wastes and industrial effluents testing and analysis.

c/ La Calera, 1
28760 Tres Cantos ~ Madrid
Phone: +34 917 286 166
Fax: +34 917 286 150
laboratorios@igme.es

DOCUMENTATION CENTRE

More than 12.000 technical reports covering all IGME's research activities are readily available at IGME's Document Information System. Some 9.000 are digitized and can be downloaded from the internet.

REGIONAL OFFICES AND DRILL-CORE REPOSITORY

Almería
c/ Real, 115 - 3º A
04002 Almería
Phone: +34 950 251 166
Fax: +34 950 251 984
almeria@igme.es

Granada
Urb. Alcázar del Genil, 4
Edif. Zulema, Bajo.
18006 Granada
Phone: +34 958 183 143 / 146
Fax: +34 958 122 990
granada@igme.es

Las Palmas de Gran Canaria
c/ Alonso Alvarado, 43 - 2ºA
35003 Las Palmas de Gran Canaria
Phone: +34 928 366 575 / 381 046
Fax: +34 928 362 024
canarias@igme.es

León
Parque Científico de León
Avda. Real, 1 - Edificio 1
24006 León
Phone: +34 987 262 171 / 182
Fax: +34 987 262 183
leon@igme.es

Murcia
Avda. Miguel de Cervantes, 45 - 5ºA
Edificio Expo Murcia
30009 Murcia
Phone: +34 968 245 012
Fax: +34 968 245 000
murcia@igme.es

Oviedo
c/ Matemático Pedrayes, 25
33005 Oviedo
Phone: +34 985 258 611 / 656
Fax: +34 985 276 767
oviedo@igme.es

Palma de Mallorca
Administración Periférica del Estado
Ciudad Querétaro, s/n
07007 Palma de Mallorca
Phone: +34 971 467 020 / 460 011
Fax: +34 971 467 156
mallorca@igme.es

Salamanca
c/ Azafranal, 48 - 1ºA
37001 Salamanca
Phone: +34 923 265 009
Fax: +34 923 265 066
salamanca@igme.es

Santiago de Compostela
c/ Cardenal Payá, 18 - 1º
15703 Santiago de Compostela
La Coruña
Phone: +34 981 562 285
Fax: +34 981 572 039
santiago@igme.es

Sevilla
Subdelegación del Gobierno
Pza. de España, Torre Norte
41013 Sevilla
Phone: +34 954 236 611 / 677
Fax: +34 954 236 737
sevilla@igme.es

Valencia
c/ Cirilo Amorós, 42 - Entreplanta
46004 Valencia
Phone: +34 963 943 474
Fax: +34 963 944 436
valencia@igme.es

Zaragoza
c/ Manuel Lasala, 44 - 9º B
50006 Zaragoza
Phone: +34 976 555 153 / 282
Fax: +34 976 553 358
zaragoza@igme.es

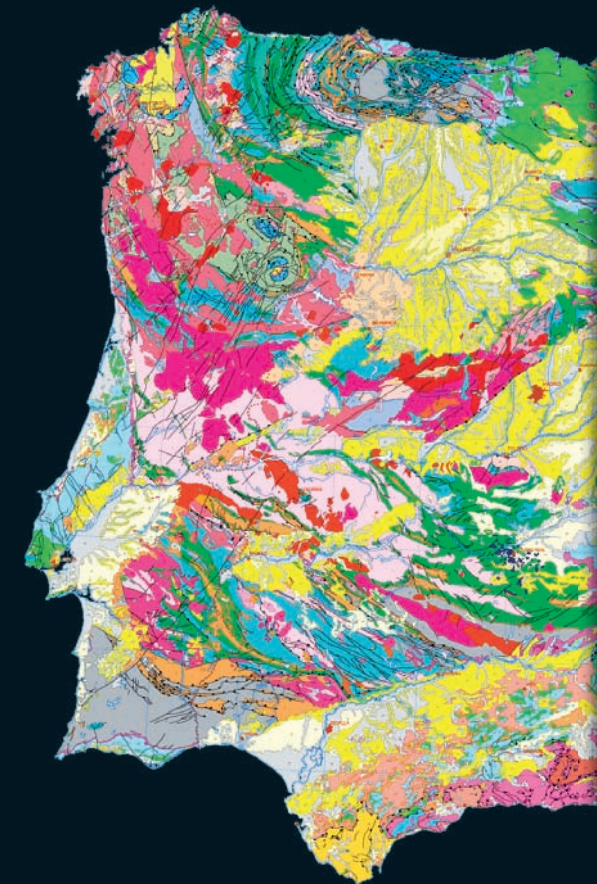
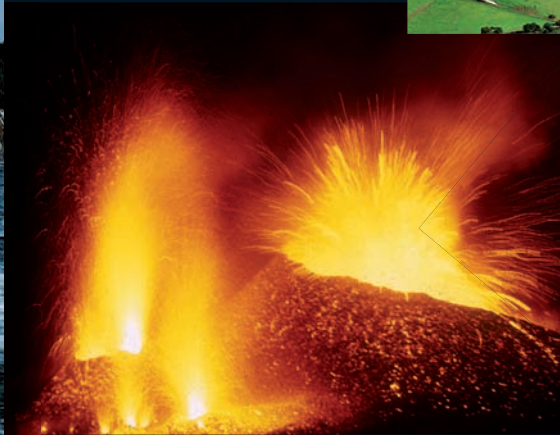
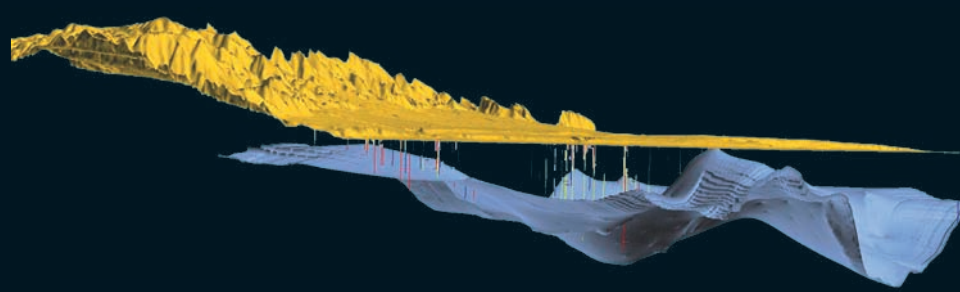
Drill-Core Repository
Ctra. Estación, s/n
Polígono La Papelera
14200 Peñarroya ~ Córdoba
Phone: +34 957 562 511
Fax: +34 957 560 225
litoteca@igme.es

Geological Survey of Spain

The stimulation of IGME's scientific and technical activity aims to strengthen its major research lines, both the forthcoming and the traditional ones. This dynamism meets society's growing sensitivity to geological hazards, groundwater sustainable management, soil contamination, environmental impact of mining and global change effects reduction, in keeping with international protocols. Likewise, it is meant to improve IGME's insertion in the Science - Technology - Company system as a self-governing Public Research Institution, encouraging the institution relations with universities, public administrations, the business sector and other self-governing Research Institutions.

GEOSCIENTIFIC INFORMATION SYSTEMS

This strategic line intends to recover and combine the available information, generating data models in suitable platforms for the current technological reality, to make them available for scientific information users. Another objective of this line is to develop and introduce internet distribution systems for this tool, facilitating inquires and downloading.



GEOSCIENTIFIC MAPPING

Geoscientific mapping is an essential element of IGME's activities since its foundation in 1849. This strategic line includes the elaboration and updating of geological and thematic maps: hydrogeology, surface geology, continental shelf geology, geomorphology and active processes, geological hazards and mineral resources maps, among others.

SUBSURFACE GEOLOGY AND CO₂ GEOLOGICAL STORAGE

The main objective of this research line is the spatial location and geometrical and hydraulic characterization of geological formations which could be used as CO₂ storage sites. This research will allow maintaining carbon dioxide emissions within the objectives of the Kyoto Protocol and other international agreements.

GEODIVERSITY, GEOLOGICAL AND MINING HERITAGE AND SCIENTIFIC CULTURE

The main components of this strategic line are the mineralogical and paleontological studies needed to preserve, update and popularize IGME's Geological and Mining Museum heritage, as well as the scientific culture outreach, which is improved by the enhancement of our historical bibliographic and cartographic database.

MINERAL RESOURCES AND ENVIRONMENTAL IMPACT OF MINING

IGME's task is based on the research of mineral raw materials, by studying and characterizing rock and mineral deposits of potential economical interest. In the mining field we expect to contribute to environmental mining planning and the recovery and remediation of mining spaces.

GEOLOGICAL HAZARDS, ACTIVE PROCESSES AND GLOBAL CHANGE

This strategic research line is focused on the analysis and characterization of geological processes and hazards with high impact in the Spanish territory. Floods, earthquakes, volcanism, landslides and coastal erosion are, due to their social and economical significance, the main natural phenomena studied.

HYDROGEOLOGY AND ENVIRONMENTAL QUALITY

IGME's activities in this field include the study of the available usable groundwater resources, their natural quality and the assessment of the pressures and impacts they are subjected to. A rational use of the resources as well as the ability to exploit them without affecting its associated ecosystems is also a priority.

GEOLOGICAL SURVEY OF SPAIN HEADQUARTERS

Head Office

c/ Ríos Rosas, 23
28003 Madrid
Phone: +34 913 495 700
Fax: +34 914 426 216

Tres Cantos Office

c/ La Calera, 1
28760 Tres Cantos ~ Madrid
Phone: +34 917 287 268
Fax: +34 917 286 150

www.igme.es