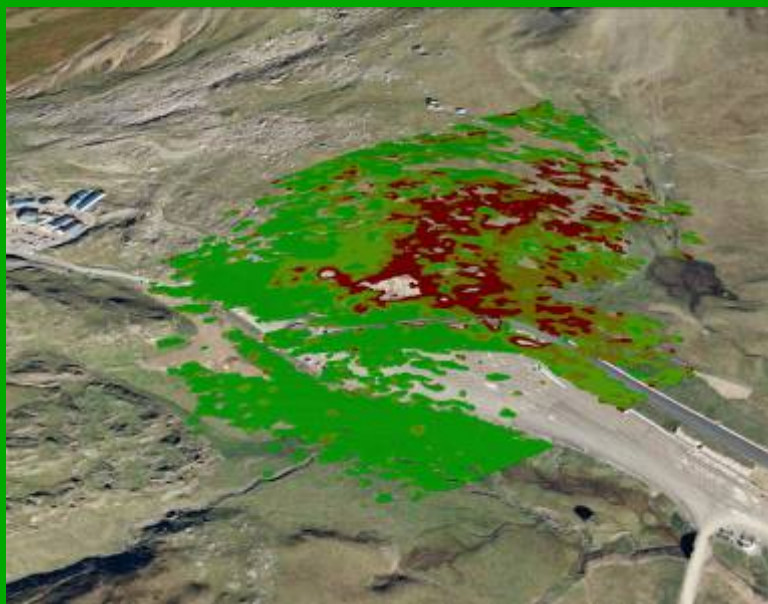




# Workshop on Terrain motion analysis based on remote sensing tools

Madrid, 18<sup>th</sup> September 2009



## Invitation

We invite you to the workshop: “Terrain motion analysis based on remote sensing tools”, which will take place in Madrid, Spain, the 18<sup>th</sup> September 2009.

The workshop is devoted to the latest advances of remote sensing ground surface monitoring. It is focused in particular on satellite-based SAR interferometry. Part of the workshop summarizes the main results of TerraFirma, a project of the European Commission and the European Spatial Agency [www.terrafirma.eu.com](http://www.terrafirma.eu.com). Results from other projects and are also presented. The workshop addresses different components of ground surface monitoring, including data acquisition techniques, data analysis tools, data exploitation and modelling based on these data.

This event, which is organized by the Instituto Geológico y Minero de España, the Institute of Geomatics and the Institut Geològic de Catalunya includes two components:

- Technical presentations related to subsidence monitoring.
- Technical presentations related to landslide monitoring.

The participation is free, but the number of participants is limited. Registration will be possible from the 1st of May 2009 through IGME web site: <http://www.igme.es> clicking on the banner “InSAR Workshop”.



Terrafirma is an ESA GMES project which combines the power of Persistent Scatter Interferometry with national geophysical expertise to provide terrain motion information products designed to save lives, improve safety and reduce economic loss. During this second three year stage of the project subsidence and landslide phenomena have been processed and interpreted in 25 countries of the European Union.

### GMES PROGRAMME

**Global Monitoring for Environment and Security**

**TERRAFIRMA PROJECT**

[www.terrafirma.eu](http://www.terrafirma.eu)

## Workshop Programme

- 09:30 Welcome. Dr. Pedro Calvo Sorando (Geological and Mining Institute of Spain, Director, Spain)
- 09:45 Introduction to Persistent Scatterer Interferometry. M. Crosetto (Institute of Geomatics, Spain)
- 10:45 Coffee break
- 11:15 ERS and TerraSAR applications to landslides and subsidence. G. Cooksely (Altamira Information SA, Spain)
- 11:55 PALSAR applications to landslides and subsidence. T. Strozzi (Gamma Remote Sensing, Switzerland)
- 12:35 Landslide monitoring and mapping with PSI techniques. N. Casagli & V. Pancioli (University of Florence, Italy)
- 13:15 Lunch time
- 14:45 Spainslides. G. Herrera (Geological and Mining Institute of Spain)
- 15:25 Subsidence analysis in Catalonia using differential interferometry. J. Marturia. (Geologic Institute of Catalonia, Spain)
- 16:05 Groundwater extraction subsidence predictive models based on differential interferometry. R. Tomás (University of Alicante, Spain)
- 16:50 Karstic subsidence analysis using differential interferometry. C. Castaneda (Gobierno de Aragón, Spain)
- 17:30 End of the Workshop

### Collaborators



## Practical information

The participation is free, but the number of participants is limited. Please register early on IGME web site: "Madrid InSAR workshop 2009".

Accommodation in Madrid is available online: <http://www.esmadrid.com/>

Contact: Gerardo Herrera +34 91 3495785 [g.herrera@igme.es](mailto:g.herrera@igme.es)  
Oriol Monserrat + 34 93 5569280 (0291) [Oriol.monserrat@ideg.es](mailto:Oriol.monserrat@ideg.es)



Location: Fundación Gomez Pardo, Calle Alenza, n.º.1, Madrid, 28003.  
Subway: Rios Rosas (Line 1).